

**RECONSTRUCTION OF NATIONAL HIGHWAY N-5 UNDER
PAKISTAN'S RESILIENT RECOVERY, REHABILITATION AND
RECONSTRUCTION FRAMEWORK PROJECT-PHASE I-A (141 KM),
SECTION-8: NOWSHERA-PESHAWER ROAD (31 KM),
LO913-A, IOCT/N-5/PHASE I-A/SECTION-8**

The following amendment has been made in Tender Documents under this Addendum, which shall be read and construed as an integral part of Tender Documents and shall take precedence in case of any conflict/ambiguity in the Tender Documents and other provisions of the Tender Documents in project mentioned above.

1. PART -II, REQUIREMENTS

Section-VII: Works Requirements (WRQ):

Page No. 341 **Drawings (as Volume-IV):**

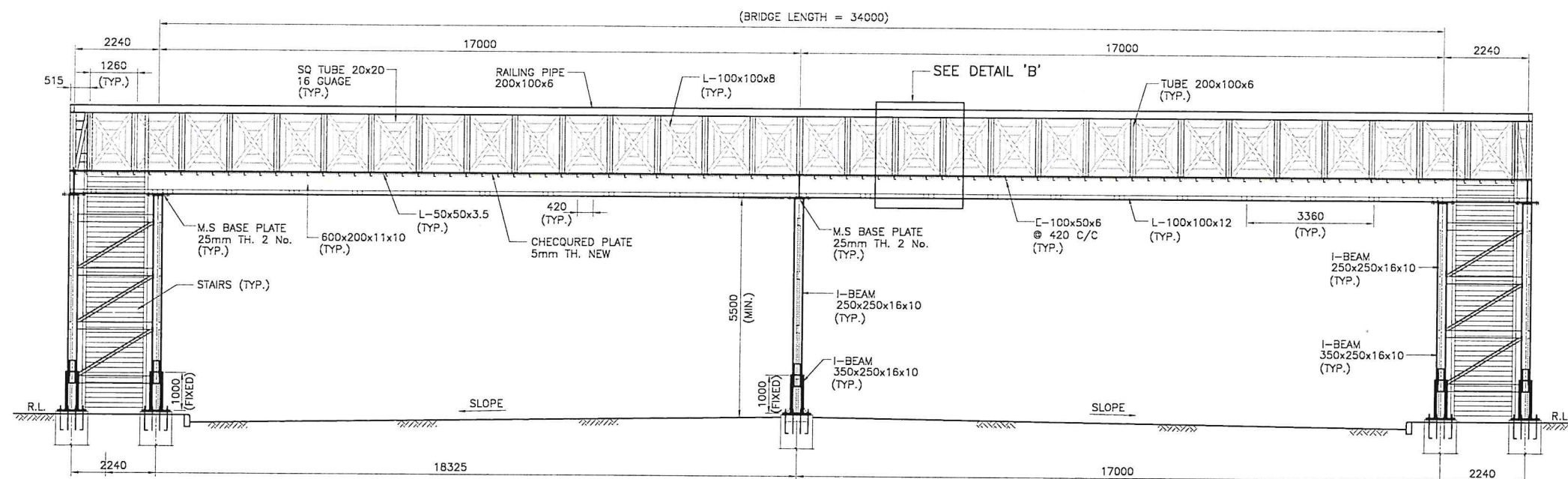
Following Tender Drawings Nos.

- a) 4825/102/TD/P1PB201
- b) 4825/102/TD/P1PB202
- c) 4825/102/TD/P1PB203

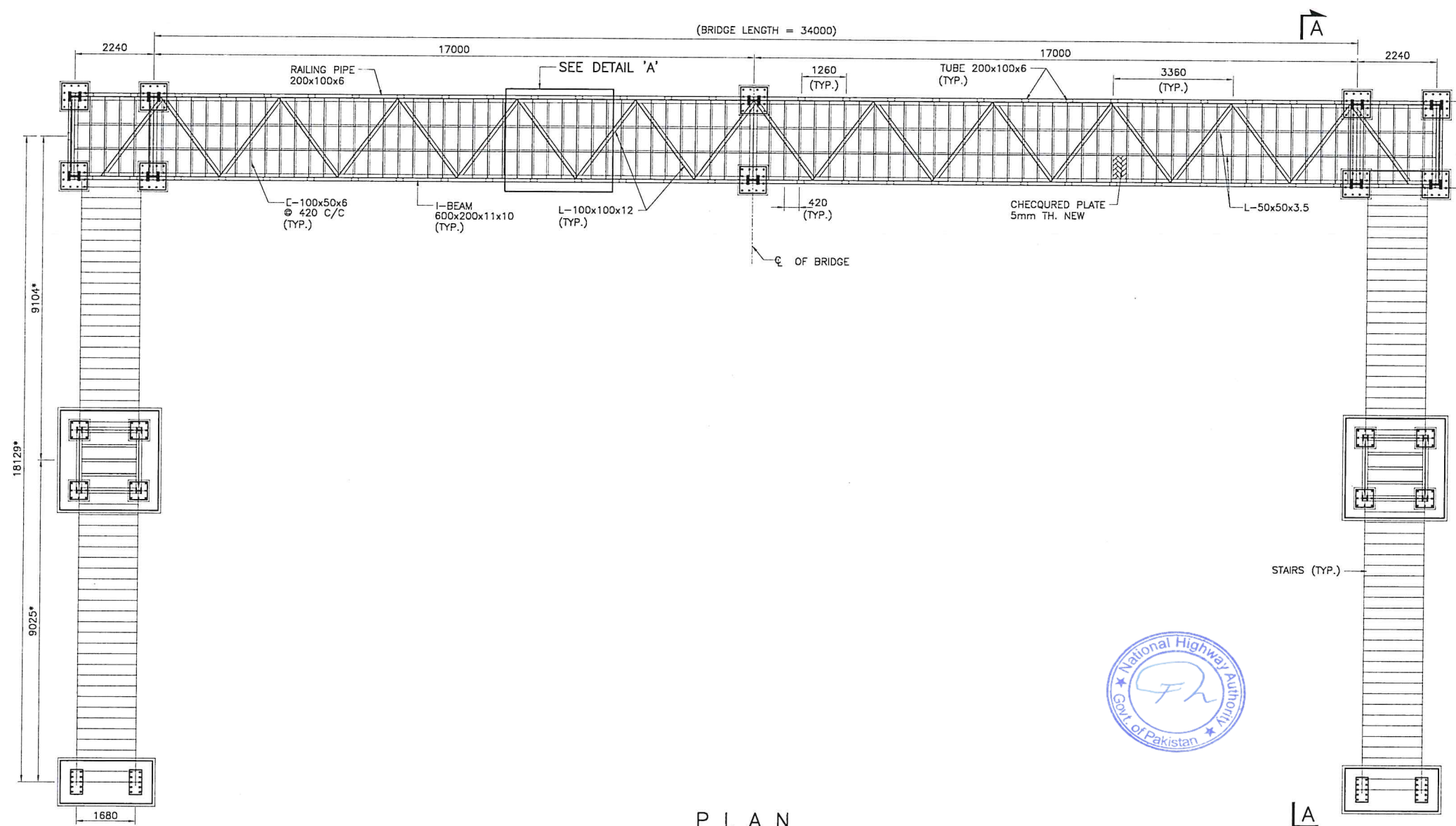
already issued related to New Pedestrian Bridges with Pile Foundation are deleted and replaced with **Annexure No. 01** to Addendum No. 03.

2. All other terms and conditions shall remain same.





ELEVATION



PLAN

NOTES:-

- ALL STRUCTURAL STEEL SHALL CONFORM TO ASTM A-36.
- ALL BOLTS, NUTS AND WASHERS SHALL CONFORM TO ASTM A325 UNLESS OTHERWISE NOTED.
- ALL WELDS SHALL CONFORM TO A.W.S. SPECIFICATIONS AND SHALL BE CHECKED BY RADIOGRAPHY. AT FABRICATION YARD & WITH DPT AT SITE.
- ALL EXPOSED STEEL SURFACES SHALL BE PAINTED (WITH POLYURETHANE PAINT OR AS PER SPECS.) SO AS TO PROVIDE ADEQUATE PROTECTION FROM RUST.
- HOLE DIAMETER FOR BOLTS NOT TO EXCEED THE NOMINAL BOLT DIAMETER BY MORE THAN 3mm.
- ALL WELDS TO BE MADE THROUGHOUT UNLESS OTHERWISE NOTED.
- USE BOC E7018 ELECTRODES UNLESS OTHERWISE NOTED.
- FOR LESS THAN OR EQUAL TO 3mm THICK PLATES USE BOC E6013 ELECTRODES.
- THE CONTRACTOR SHALL SUBMIT HIS DETAIL ERECTION METHODOLOGY BEFORE EXECUTION AT SITE FOR APPROVAL OF ENGINEER.
- THE I-SECTION AND CHANNEL SECTION HAS BEEN DESIGNATED IN TERM OF DEPTH (d), FLANGE WIDTH (bf), THICKNESS OF WEB (tw) AND THICKNESS OF FLANGE (tf).
- WORK THIS DRAWING WITH OTHER RELEVANT HIGHWAY DRAWINGS.
- DIMENSIONS WITH (*) MUST BE CONFIRMED AS PER SITE CONDITIONS.
- ALL PLATES MUST CONFORM TO HR235 STANDARD.
- STAINLESS STEEL PIPE MUST CONFORM TO ASTM A999 G201 GAUGE 16 AND MUST BE NON-MAGNETIC.
- J-BOLTS MUST CONFORM TO ASTM F1554-07ae1 HAVING MIN. YIELD STRENGTH OF 60 KSI. AND MUST BE HOT DIPPED GALVANIZED.
- ALL TUBE SECTIONS MUST BE OF HR235 STANDARD.
- FIXITY OF MAIN DECK GIRDER MUST BE ENSURED BEFORE IMPOSING ANY DEAD LOADS.
- NEGATIVE (UPWARDS) PRECAMBER OF 30mm MUST BE PROVIDED AT MID OF EACH SPAN DURING FABRICATION.
- ALL EXISTING WELDS OF MEMBER SHALL BE CHECKED & RE WELDED AS PER NEW DESIGN ACCORDING TO ENGINEER DECISION.

CLIENT
GOVERNMENT OF PAKISTAN
MINISTRY OF COMMUNICATIONS
NATIONAL HIGHWAY AUTHORITY

CONSULTANT
NATIONAL ENGINEERING SERVICES
PAKISTAN (PVT.) LTD.
HEAD OFFICE:- NESPAK HOUSE, I-C, BLOCK-N,
MODEL TOWN EXTENSION, LAHORE, PAKISTAN.

04			DRAWN	WARIS
03			SUBMITTED	
02			RECOMMENDED	
01			CHD/VER.	
REV.	DATE	DESCRIPTION	APPROVED	APPROVED

RECONSTRUCTION OF NATIONAL HIGHWAY N-5 UNDER
PAKISTAN'S RESILIENT RECOVERY, REHABILITATION
AND RECONSTRUCTION FRAMEWORK PROJECT,
PHASE - I (210Km).
SECTION - 8
NOWSHERA - PESHAWAR 31Km

GENERAL ARRANGEMENT AND CROSS SECTION
PEDESTRIAN BRIDGE HEAD END MAIN CARB.

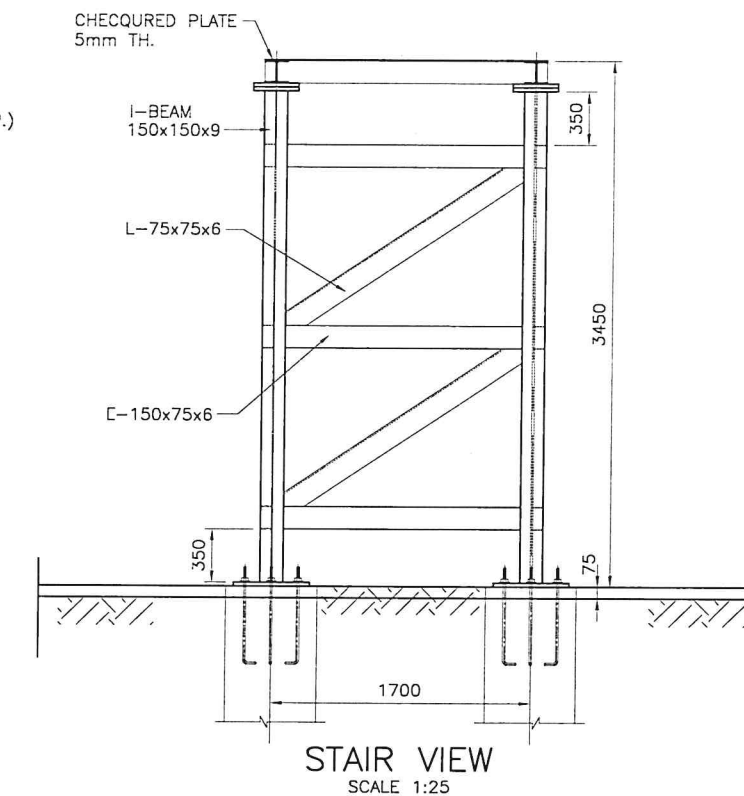
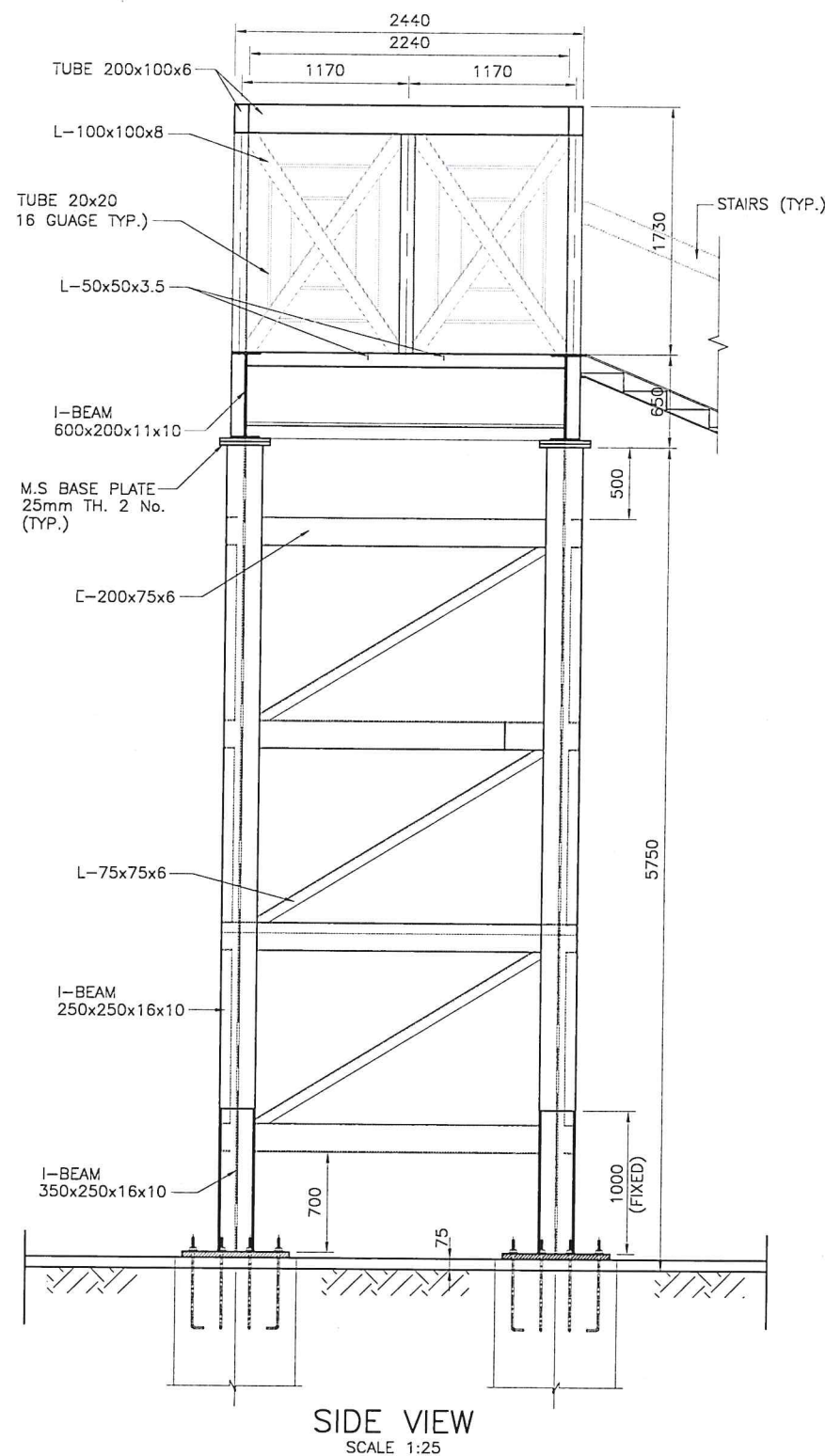
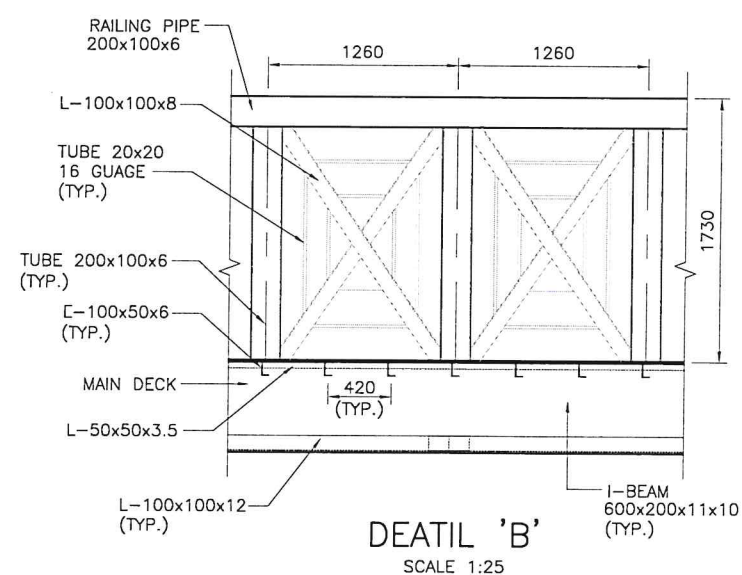
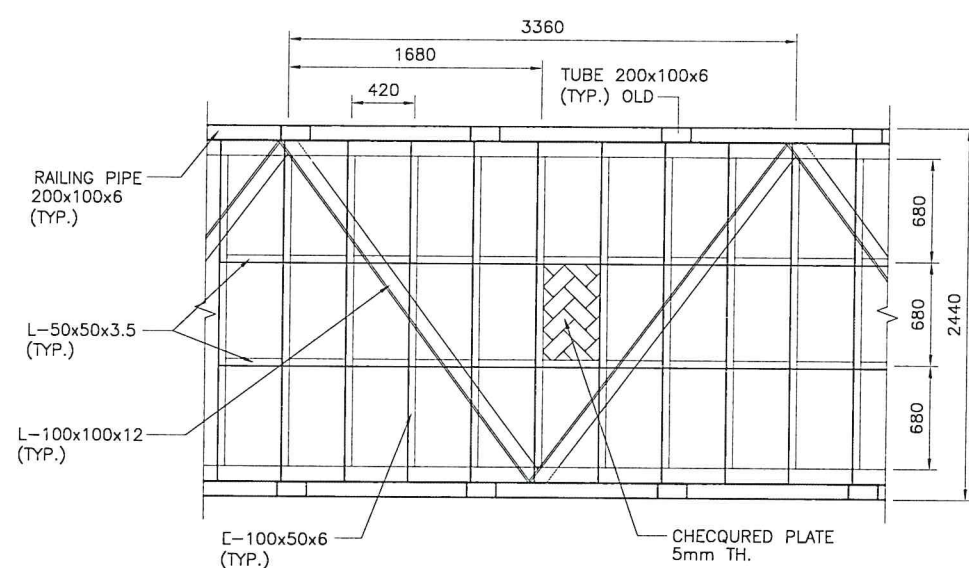
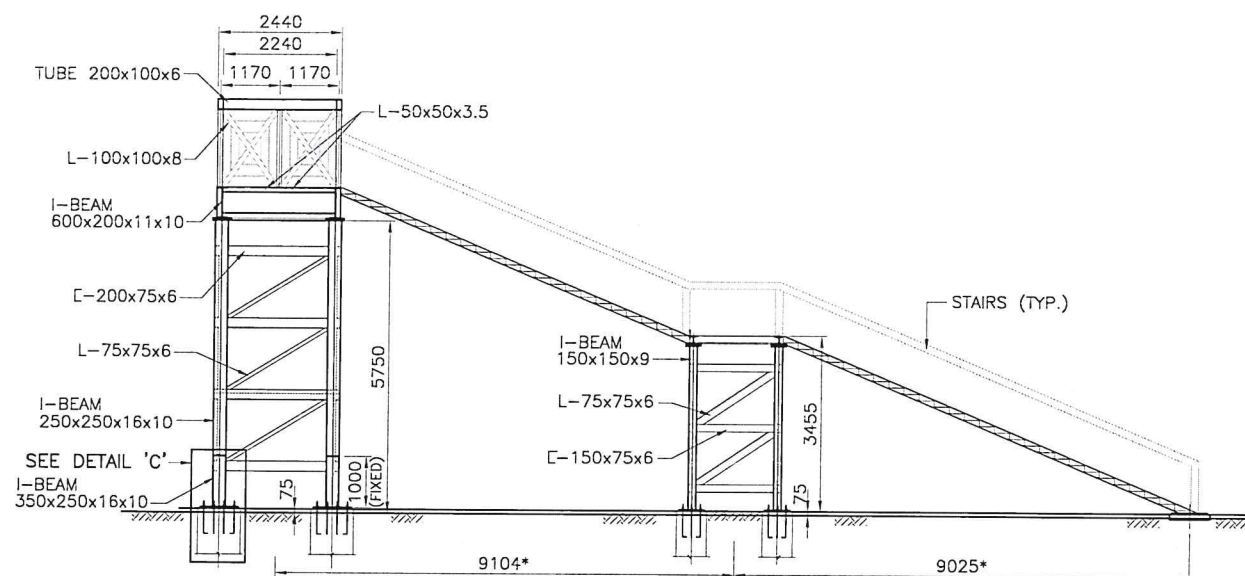
SCALE

1: 100

DATE
JUNE 2026

DRAWING No.
4825/102/TD/P1G101

REV.
0



NOTES:—

1. REFER ONTES OF DWG. P1G102

CLIENT
GOVERNMENT OF PAKISTAN
MINISTRY OF COMMUNICATIONS
NATIONAL HIGHWAY AUTHORITY

CONSULTANT
NATIONAL ENGINEERING SERVICES
PAKISTAN (PVT.) LTD.
HEAD OFFICE:- NESPAK HOUSE, I-C, BLOCK-N,
MODEL TOWN EXTENSION, LAHORE, PAKISTAN.

04				DRAWN	WARIS
03				SUBMITTED	
02				RECOMMENDED	
01				CHD./VER.	
REV.	DATE	DESCRIPTION	APPROVED	APPROVED	

RECONSTRUCTION OF NATIONAL HIGHWAY N-5 UNDER
PAKISTAN'S RESILIENT RECOVERY, REHABILITATION
AND RECONSTRUCTION FRAMEWORK PROJECT,
PHASE - I (210Km).
SECTION - 8
NOWSHERA - PESHAWAR 31Km

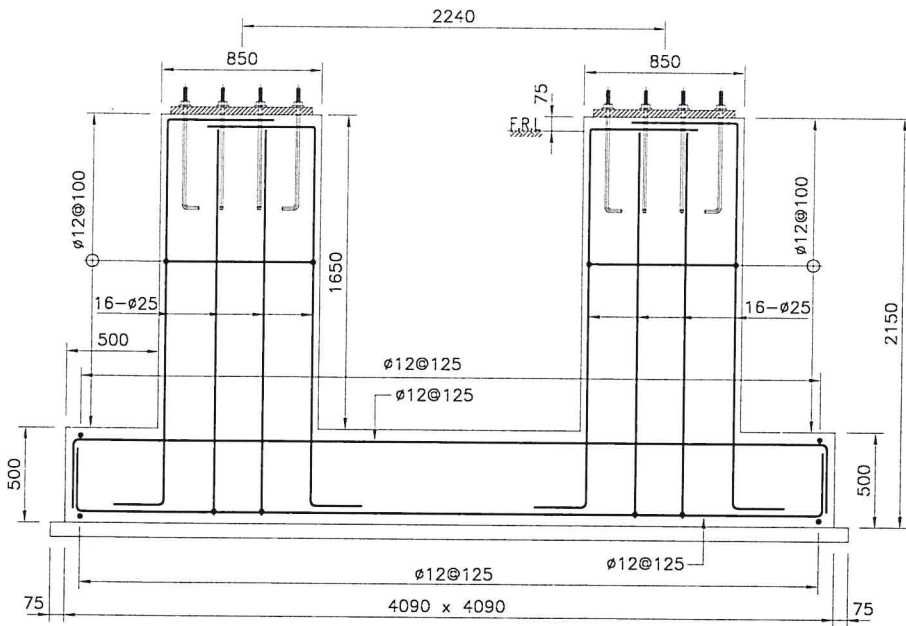
GENERAL ARRANGEMENT AND CROSS SECTION
PEDESTRIAN BRIDGE

SCALE
1: 100

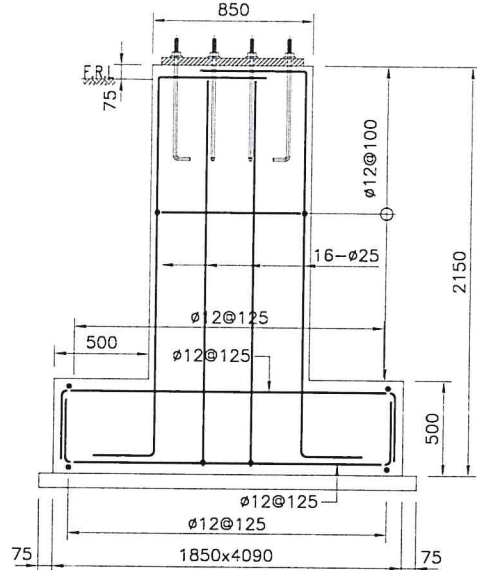
DATE
JUNE 2026

DRAWING No.
4825/102/TD/P1G102

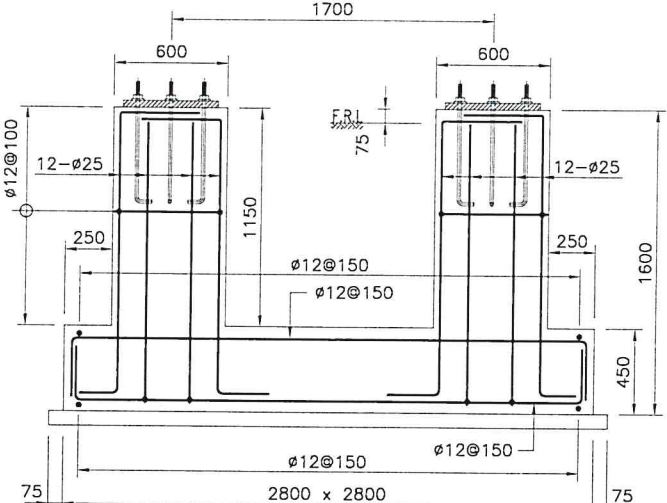
REV.
0



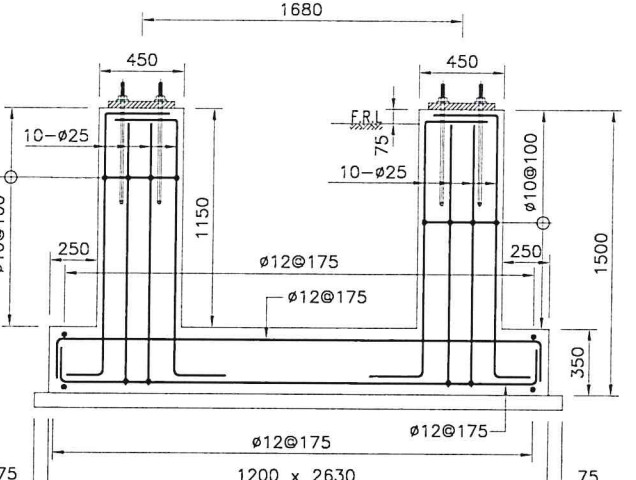
SECTION A-A
(FOOTING F1)
(COLUMN P1 & P2)



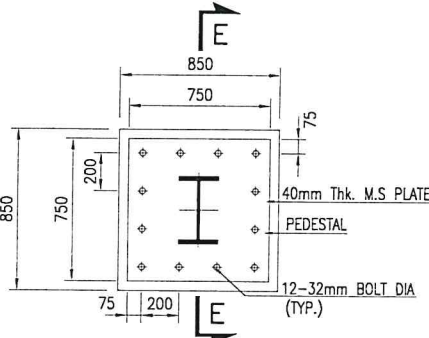
SECTION B-B
(FOOTING F2)
(COLUMN P3)



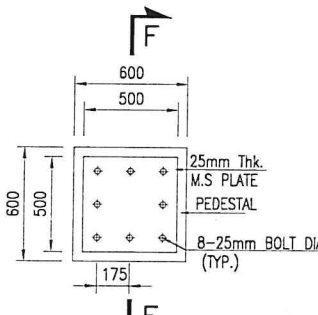
SECTION C-C
(FOOTING F3)
(COLUMN P4 & P5)



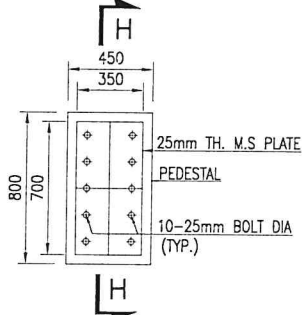
SECTION D-D
(FOOTING F4)
(COLUMN P6 & P7)



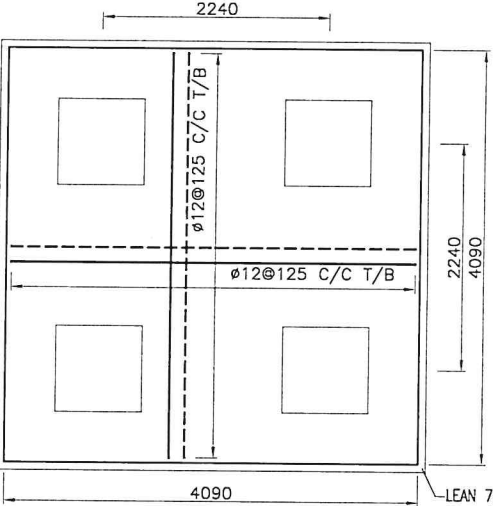
TYPICAL PLAN OF
(BASE PLATE P1 P2 & P3)



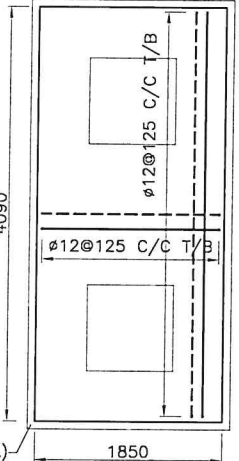
TYPICAL PLAN OF
(BASE PLATE P4 & P5)



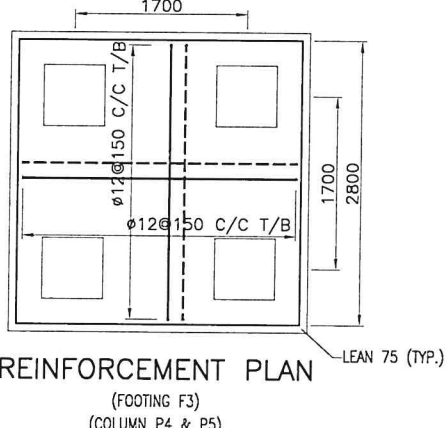
TYPICAL PLAN OF
(BASE PLATE P6 & P7)



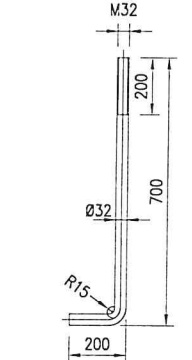
REINFORCEMENT PLAN
(FOOTING F1)
(COLUMN P1 & P2)



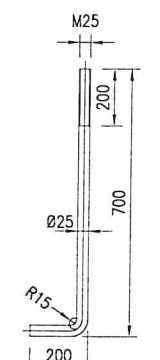
REINFORCEMENT PLAN
(FOOTING F2)
(COLUMN P3)



REINFORCEMENT PLAN
(FOOTING F3)
(COLUMN P4 & P5)



FOUNDATION
BOLT ø32



FOUNDATION
BOLT ø25

- NOTES
1. ALL STRUCTURAL STEEL SHALL CONFORM TO ASTM A-36.
 2. ALL BOLTS, NUTS AND WASHERS SHALL CONFORM TO ASTM A325 UNLESS OTHERWISE NOTED.
 3. ALL WELDS SHALL CONFORM TO A.W.S. SPECIFICATIONS AND SHALL BE CHECKED BY RADIOGRAPHY.
 4. ALL EXPOSED STEEL SURFACES SHALL BE PAINTED, SO AS TO PROVIDE ADEQUATE PROTECTION FROM RUST.
 5. HOLE DIAMETER FOR BOLTS NOT TO EXCEED THE NOMINAL BOLT DIAMETER BY MORE THAN 3mm.
 6. ALL WELDS TO BE MADE THROUGHOUT UNLESS OTHERWISE NOTED.
 7. USE E70 ELECTRODES UNLESS OTHERWISE NOTED.
 8. THE SHOP DRAWINGS FOR THE STRUCTURE SHALL BE PREPARED BY THE CONTRACTOR AND APPROVED BY THE ENGINEER/OWNER'S REPRESENTATIVE BEFORE START OF FABRICATION.
 9. THE CONTRACTOR SHALL SUBMIT HIS DETAIL ERECTION METHODOLOGY BEFORE EXECUTION AT SITE FOR APPROVAL OF ENGINEER/OWNER'S REPRESENTATIVE.
 10. THE I-SECTION & CHANNEL SECTION HAS BEEN DESIGNATED IN TERM OF DEPTH (d), FLANGE WIDTH (bf), THICKNESS OF WEB (tw) AND THICKNESS OF FLANGE (tf).
 11. WORK THIS DRAWING WITH OTHER RELEVANT DRAWINGS.
 12. DIMENSION MARKED WITH * SHOULD BE ADJUSTED AS PER SITE.
 13. ALL REINFORCED CONCRETE SHALL HAVE MIN. CYLINDER STRENGTH OF 4000 psi. CONFORMING TO CLASS A3.
 14. J-BOLTS MUST BE OF JIS G3101-SS400 STANDARD.



CLIENT
GOVERNMENT OF PAKISTAN
MINISTRY OF COMMUNICATIONS
NATIONAL HIGHWAY AUTHORITY

CONSULTANT
NATIONAL ENGINEERING SERVICES
PAKISTAN (PVT.) LTD.
HEAD OFFICE:- NESPAK HOUSE, I-C, BLOCK-N,
MODEL TOWN EXTENSION, LAHORE, PAKISTAN.

04				DRAWN	WARIS
03				SUBMITTED	
02				RECOMMENDED	
01				CHD./VER.	
REV.	DATE	DESCRIPTION	APPROVED	APPROVED	

RECONSTRUCTION OF NATIONAL HIGHWAY N-5 UNDER
PAKISTAN'S RESILIENT RECOVERY, REHABILITATION
AND RECONSTRUCTION FRAMEWORK PROJECT,
PHASE - I (210Km).
SECTION - 8
NOWSHERA - PESHAWAR 31Km

FOUNDATION- SECTION & DETAILS PEDESTRIAN BRIDGE PESHAWAR 31Km		SCALE 1:100
DATE JUNE 2026	DRAWING No. 4825/102/TD/P1G103	REV. 0